

## LM79XX Series 3-Terminal Negative Regulators

### General Description

The LM79XX series of 3-terminal regulators is available with fixed output voltages of  $-5V$ ,  $-8V$ ,  $-12V$ , and  $-15V$ . These devices need only one external component—a compensation capacitor at the output. The LM79XX series is packaged in the TO-220 power package and is capable of supplying 1.5A of output current.

These regulators employ internal current limiting, safe area protection and thermal shutdown for protection against virtually all overload conditions.

Low ground pin current of the LM79XX series allows output voltage to be easily boosted above the preset value with a resistor divider. The low quiescent current drain of

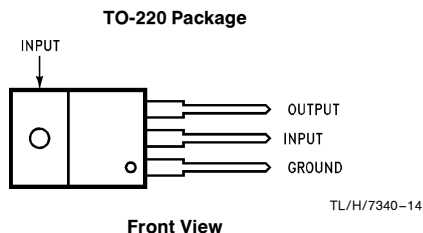
these devices with a specified maximum change with line and load ensures good regulation in the voltage boosted mode.

For applications requiring other voltages, see LM137 data sheet.

### Features

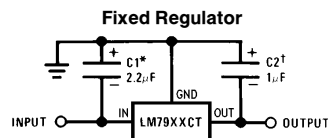
- Thermal, short circuit and safe area protection
- High ripple rejection
- 1.5A output current
- 4% tolerance on preset output voltage

### Connection Diagrams



Order Number LM7905CT, LM7912CT or LM7915CT  
See NS Package Number TO3B

### Typical Applications



TL/H/7340-3

\*Required if regulator is separated from filter capacitor by more than 3". For value given, capacitor must be solid tantalum. 25  $\mu F$  aluminum electrolytic may be substituted.

†Required for stability. For value given, capacitor must be solid tantalum. 25  $\mu F$  aluminum electrolytic may be substituted. Values given may be increased without limit.

For output capacitance in excess of 100  $\mu F$ , a high current diode from input to output (1N4001, etc.) will protect the regulator from momentary input shorts.

## Absolute Maximum Ratings (Note 1)

If Military/Aerospace specified devices are required, please contact the National Semiconductor Sales Office/Distributors for availability and specifications.

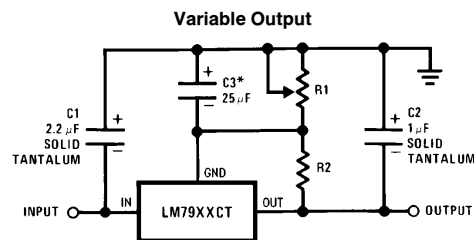
|                             |      |
|-----------------------------|------|
| Input Voltage               |      |
| ( $V_O = -5V$ )             | -25V |
| ( $V_O = -12V$ and $-15V$ ) | -35V |

|                                       |                    |
|---------------------------------------|--------------------|
| Input-Output Differential             |                    |
| ( $V_O = -5V$ )                       | 25V                |
| ( $V_O = -12V$ and $-15V$ )           | 30V                |
| Power Dissipation (Note 2)            | Internally Limited |
| Operating Junction Temperature Range  | 0°C to +125°C      |
| Storage Temperature Range             | -65°C to +150°C    |
| Lead Temperature (Soldering, 10 sec.) | 230°C              |

**Electrical Characteristics** Conditions unless otherwise noted:  $I_{OUT} = 500$  mA,  $C_{IN} = 2.2$   $\mu$ F,  $C_{OUT} = 1$   $\mu$ F, 0°C  $\leq T_J \leq +125^\circ$ C, Power Dissipation  $\leq 1.5$ W.

| Part Number                                |   |   | LM7905C  |                                    |               | Units                                 |
|--|---|---|--|------------------------------------|---------------|---------------------------------------|
| Output Voltage                             |   |   | − 5V   |                                    |               |                                       |
| Input Voltage (unless otherwise specified) |   |   | − 10V  |                                    |               |                                       |
| Symbol                                     | Parameter   | Conditions  | Min  | Typ                                | Max           |                                       |
| V <sub>O</sub>                             | Output Voltage                                    | T <sub>J</sub> = 25°C<br>5 mA ≤ I <sub>OUT</sub> ≤ 1 A,<br>P ≤ 15W                                      | −4.8<br>−4.75  | −5.0                               | −5.2<br>−5.25 | V<br>V<br>V                           |
| ΔV <sub>O</sub>                            | Line Regulation                                   | T <sub>J</sub> = 25°C, (Note 3)   | 8<br>(−25 ≤ V <sub>IN</sub> ≤ −7)<br>2<br>(−12 ≤ V <sub>IN</sub> ≤ −8) |                                    |               | 50<br><br>15<br><br>V<br>V<br>mV<br>V |
| ΔV <sub>O</sub>                            | Load Regulation                                   | T <sub>J</sub> = 25°C, (Note 3)<br>5 mA ≤ I <sub>OUT</sub> ≤ 1.5A<br>250 mA ≤ I <sub>OUT</sub> ≤ 750 mA | 15<br>5  |                                    |               | 100<br>50<br><br>mV<br>mV             |
| I <sub>Q</sub>                             | Quiescent Current                                 | T <sub>J</sub> = 25°C   | 1  |                                    |               | 2<br><br>mA                           |
| ΔI <sub>Q</sub>                            | Quiescent Current Change                          | With Line<br><br>With Load, 5 mA ≤ I <sub>OUT</sub> ≤ 1A  | 0.5<br>(−25 ≤ V <sub>IN</sub> ≤ −7)<br><br>0.5                         |                                    |               | mA<br>V<br>mA                         |
| V <sub>n</sub>                             | Output Noise Voltage                              | T <sub>A</sub> = 25°C, 10 Hz ≤ f ≤ 100 Hz   | 125  |                                    |               | μV                                    |
|  | Ripple Rejection                                  | f = 120 Hz  | 54   | 66<br>(−18 ≤ V <sub>IN</sub> ≤ −8) |               | dB<br>V                               |
|  | Dropout Voltage                                   | T <sub>J</sub> = 25°C, I <sub>OUT</sub> = 1A  | 1.1  |                                    |               | V                                     |
| I <sub>OMAX</sub>                          | Peak Output Current                               | T <sub>J</sub> = 25°C   | 2.2  |                                    |               | A                                     |
|  | Average Temperature Coefficient of Output Voltage | I <sub>OUT</sub> = 5 mA,<br>0 C ≤ T <sub>J</sub> ≤ 100°C  | 0.4  |                                    |               | mV/°C                                 |

## Typical Applications (Continued)



\*Improves transient response and ripple rejection. Do not increase beyond 50  $\mu$ F.

TL/H/7340-2

$$V_{OUT} = V_{SET} \left( \frac{R1 + R2}{R2} \right)$$

Select R2 as follows:  
 LM7905CT 300 $\Omega$   
 LM7912CT 750 $\Omega$   
 LM7915CT 1k

**Electrical Characteristics** (Continued) Conditions unless otherwise noted:  $I_{OUT} = 500 \text{ mA}$ ,  $C_{IN} = 2.2 \mu\text{F}$ ,  $C_{OUT} = 1 \mu\text{F}$ ,  $0^\circ\text{C} \leq T_J \leq +125^\circ\text{C}$ , Power Dissipation =  $1.5\text{W}$ .

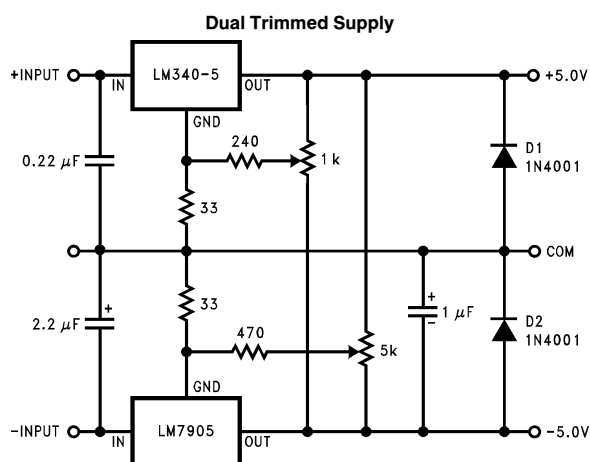
| Part Number                                |   |   | LM7912C  |                |                | LM7915C  |  |  | Units              |
|--|---|---|--|----------------|----------------|--|--|--|--------------------|
| Output Voltage                             |   |   | − 12V  |                |                | − 15V  |  |  |                    |
| Input Voltage (unless otherwise specified) |   |   | − 19V  |                |                | − 23V  |  |  |                    |
| Symbol                                     | Parameter   | Conditions  | Min  | Typ            | Max            | Min  | Typ  | Max  |                    |
| V <sub>O</sub>                             | Output Voltage                                    | T <sub>J</sub> = 25°C<br>5 mA ≤ I <sub>OUT</sub> ≤ 1A,<br>P ≤ 15W                                       | −11.5<br>−11.4<br>(−27 ≤ V <sub>IN</sub> ≤ −14.5)                          | −12.0<br>−12.6 | −12.5<br>−12.6 | −14.4<br>−14.25<br>(−30 ≤ V <sub>IN</sub> ≤ −17.5)                           | −15.0<br>−15.75<br>(−30 ≤ V <sub>IN</sub> ≤ −17.5) | −15.6<br>−15.75<br>(−30 ≤ V <sub>IN</sub> ≤ −17.5) | V<br>V<br>V        |
| ΔV <sub>O</sub>                            | Line Regulation                                   | T <sub>J</sub> = 25°C, (Note 3)   | 5<br>(−30 ≤ V <sub>IN</sub> ≤ −14.5)<br>3<br>(−22 ≤ V <sub>IN</sub> ≤ −16) |                |                | 80<br>(−30 ≤ V <sub>IN</sub> ≤ −14.5)<br>30<br>(−26 ≤ V <sub>IN</sub> ≤ −20) |  |  | mV<br>V<br>mV<br>V |
| ΔV <sub>O</sub>                            | Load Regulation                                   | T <sub>J</sub> = 25°C, (Note 3)<br>5 mA ≤ I <sub>OUT</sub> ≤ 1.5A<br>250 mA ≤ I <sub>OUT</sub> ≤ 750 mA | 15<br>5<br>200<br>75   |                |                | 15<br>5<br>200<br>75   |  |  | mV<br>mV           |
| I <sub>Q</sub>                             | Quiescent Current                                 | T <sub>J</sub> = 25°C   | 1.5<br>3   |                |                | 1.5<br>3   |  |  | mA                 |
| ΔI <sub>Q</sub>                            | Quiescent Current Change                          | With Line<br><br>With Load, 5 mA ≤ I <sub>OUT</sub> ≤ 1A  | 0.5<br>(−30 ≤ V <sub>IN</sub> ≤ −14.5)<br>0.5                              |                |                | 0.5<br>(−30 ≤ V <sub>IN</sub> ≤ −17.5)<br>0.5                                |  |  | mA<br>V<br>mA      |
| V <sub>n</sub>                             | Output Noise Voltage                              | T <sub>A</sub> = 25°C, 10 Hz ≤ f ≤ 100 Hz   | 300  |                |                | 375  |  |  | μV                 |
|  | Ripple Rejection                                  | f = 120 Hz  | 54<br>70<br>(−25 ≤ V <sub>IN</sub> ≤ −15)                                  |                |                | 54<br>70<br>(−30 ≤ V <sub>IN</sub> ≤ −17.5)                                  |  |  | dB<br>V            |
|  | Dropout Voltage                                   | T <sub>J</sub> = 25°C, I <sub>OUT</sub> = 1A  | 1.1  |                |                | 1.1  |  |  | V                  |
| I <sub>OMAX</sub>                          | Peak Output Current                               | T <sub>J</sub> = 25°C   | 2.2  |                |                | 2.2  |  |  | A                  |
|  | Average Temperature Coefficient of Output Voltage | I <sub>OUT</sub> = 5 mA,<br>0 C ≤ T <sub>J</sub> ≤ 100°C  | −0.8   |                |                | −1.0   |  |  | mV/°C              |

**Note 1:** Absolute Maximum Ratings indicate limits beyond which damage to the device may occur. Operating Ratings indicate conditions for which the device is intended to be functional, but do not guarantee Specific Performance limits. For guaranteed specifications and test conditions, see the Electrical Characteristics.

**Note 2:** Refer to Typical Performance Characteristics and Design Considerations for details.

**Note 3:** Regulation is measured at a constant junction temperature by pulse testing with a low duty cycle. Changes in output voltage due to heating effects must be taken into account.

## Typical Applications (Continued)



## Design Considerations

The LM79XX fixed voltage regulator series has thermal overload protection from excessive power dissipation, internal short circuit protection which limits the circuit's maximum current, and output transistor safe-area compensation for reducing the output current as the voltage across the pass transistor is increased.

Although the internal power dissipation is limited, the junction temperature must be kept below the maximum specified temperature (125°C) in order to meet data sheet specifications. To calculate the maximum junction temperature or heat sink required, the following thermal resistance values should be used:

| Package | Typ<br>$\theta_{JC}$<br>°C/W | Max<br>$\theta_{JC}$<br>°C/W | Typ<br>$\theta_{JA}$<br>°C/W | Max<br>$\theta_{JA}$<br>°C/W |
|---------|------------------------------|------------------------------|------------------------------|------------------------------|
| TO-220  | 3.0                          | 5.0                          | 60                           | 40                           |

$$P_{D\text{ MAX}} = \frac{T_{J\text{ MAX}} - T_A}{\theta_{JC} + \theta_{CA}} \text{ or } \frac{T_{J\text{ MAX}} - T_A}{\theta_{JA}}$$

$$\theta_{CA} = \theta_{CS} + \theta_{SA} \text{ (without heat sink)}$$

Solving for  $T_J$ :

$$T_J = T_A + P_D (\theta_{JC} + \theta_{CA}) \text{ or } \\ = T_A + P_D \theta_{JA} \text{ (without heat sink)}$$

Where:

$T_J$  = Junction Temperature

$T_A$  = Ambient Temperature

$P_D$  = Power Dissipation

$\theta_{JA}$  = Junction-to-Ambient Thermal Resistance

$\theta_{JC}$  = Junction-to-Case Thermal Resistance

$\theta_{CA}$  = Case-to-Ambient Thermal Resistance

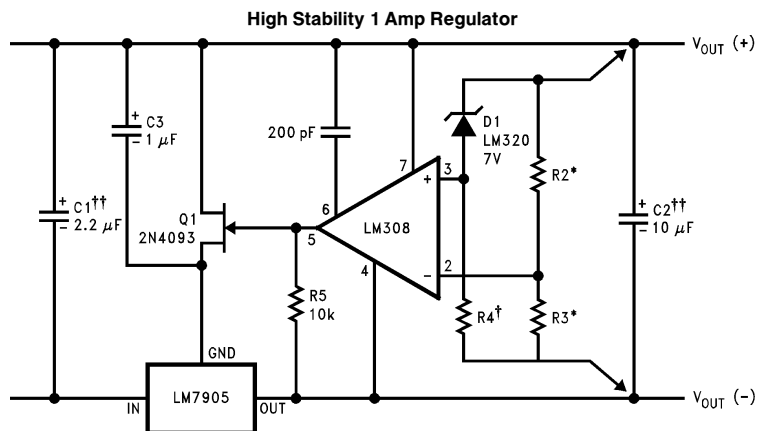
$\theta_{CS}$  = Case-to-Heat Sink Thermal Resistance

$\theta_{SA}$  = Heat Sink-to-Ambient Thermal Resistance

## Typical Applications (Continued)

Bypass capacitors are necessary for stable operation of the LM79XX series of regulators over the input voltage and output current ranges. Output bypass capacitors will improve the transient response by the regulator.

The bypass capacitors, (2.2  $\mu\text{F}$  on the input, 1.0  $\mu\text{F}$  on the output) should be ceramic or solid tantalum which have good high frequency characteristics. If aluminum electrolytics are used, their values should be 10  $\mu\text{F}$  or larger. The bypass capacitors should be mounted with the shortest leads, and if possible, directly across the regulator terminals.



TL/H/7340-5

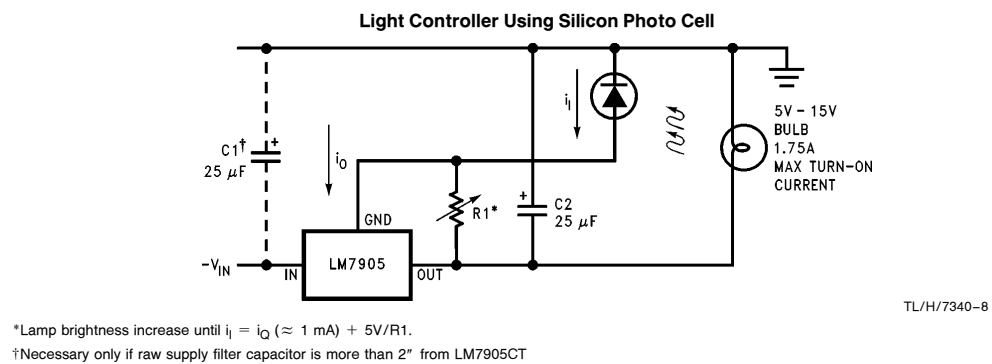
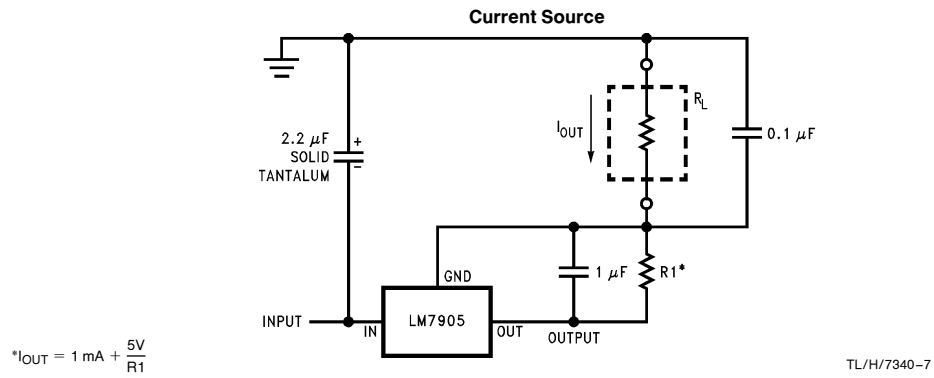
Load and line regulation < 0.01% temperature stability ≤ 0.2%

†Determine Zener current

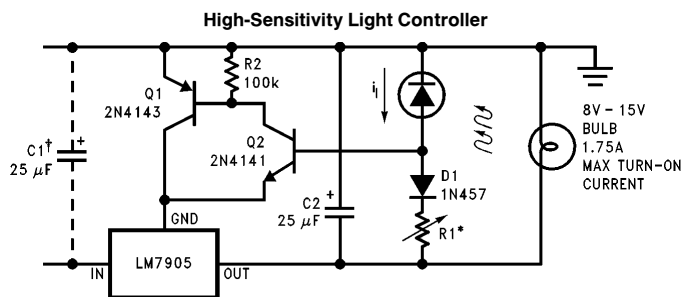
††Solid tantalum

\*Select resistors to set output voltage. 2 ppm/°C tracking suggested

## Typical Applications (Continued)



## Typical Applications (Continued)

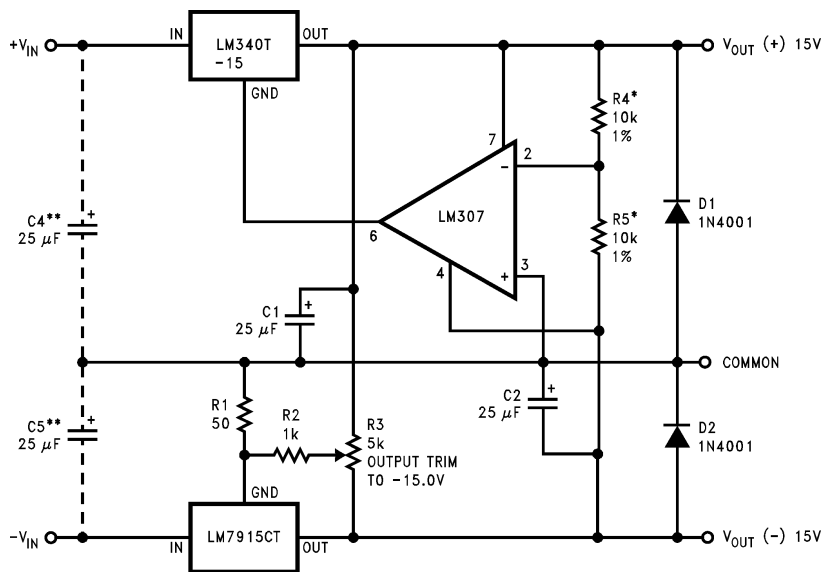


TL/H/7340-9

\*Lamp brightness increases until  $i_i = 5V/R_1$  ( $i_i$  can be set as low as  $1 \mu A$ )

†Necessary only if raw supply filter capacitor is more than 2" from LM7905

### **± 15V, 1 Amp Tracking Regulators**



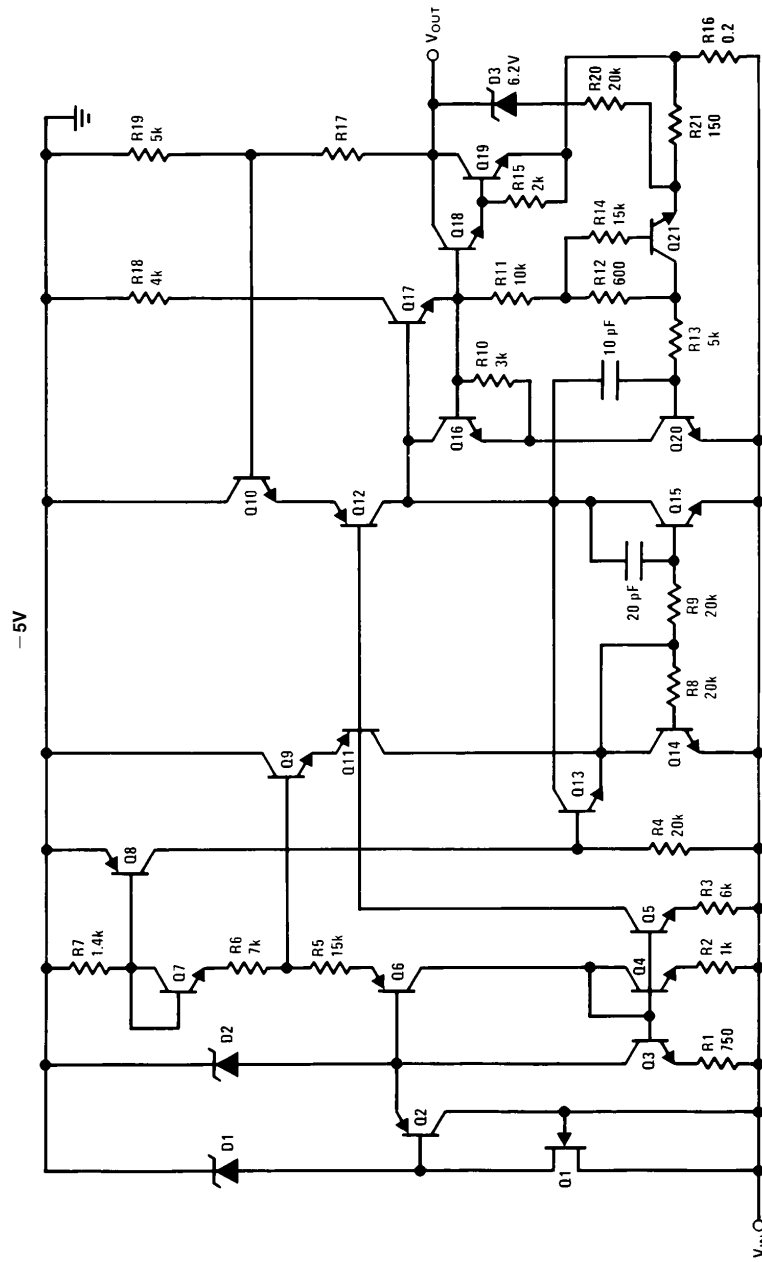
TL/H/7340-1

|  | (-15)                | (+15)                |
|--|----------------------|----------------------|
| Load Regulation at $\Delta I_L = 1\text{ A}$                           | 40 mV                | 2 mV                 |
| Output Ripple, $C_{IN} = 3000\text{ }\mu\text{F}$ , $I_L = 1\text{ A}$ | 100 $\mu\text{Vrms}$ | 100 $\mu\text{Vrms}$ |
| Temperature Stability  | 50 mV                | 50 mV                |
| Output Noise 10 Hz $\leq f \leq 10\text{ kHz}$                         | 150 $\mu\text{Vrms}$ | 150 $\mu\text{Vrms}$ |

\*Resistor tolerance of R4 and R5 determine matching of (+) and (-) outputs.

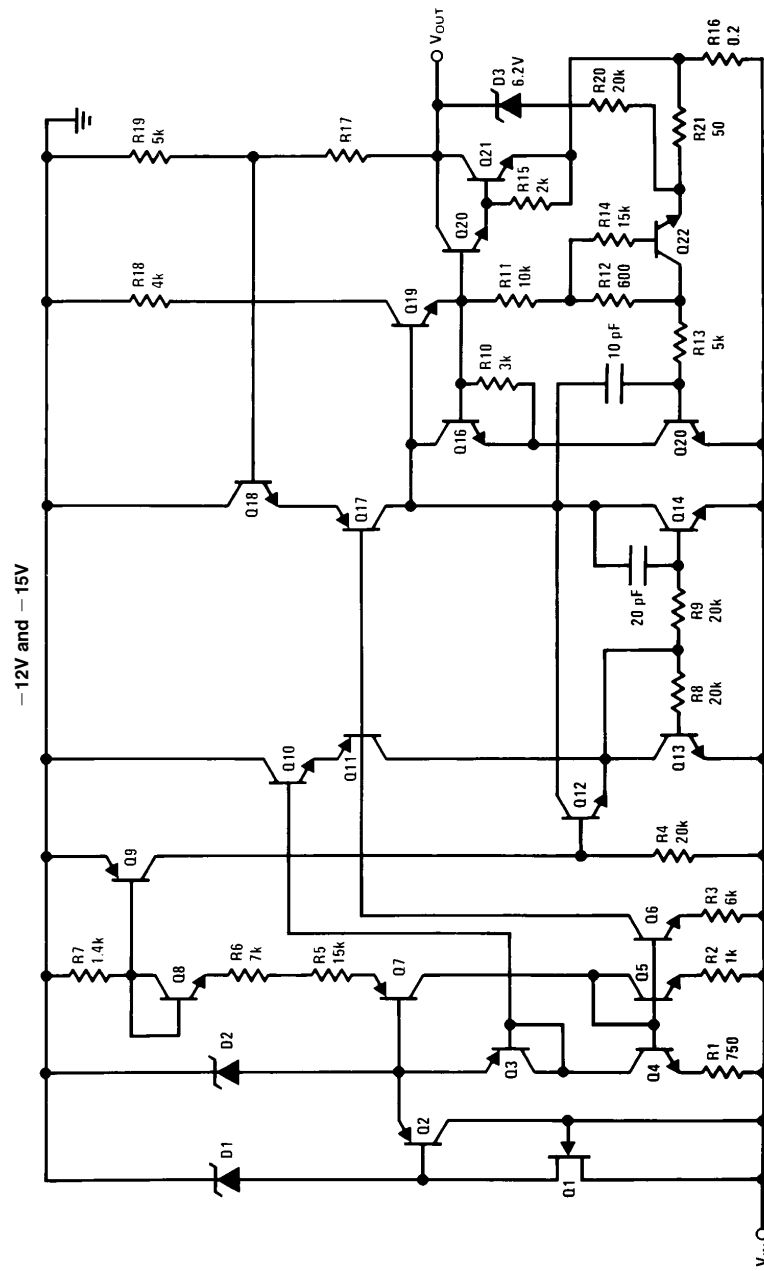
\*\*Necessary only if raw supply filter capacitors are more than 3" from regulators.

## Schematic Diagrams



TL/H/7340-12

### Schematic Diagrams (Continued)

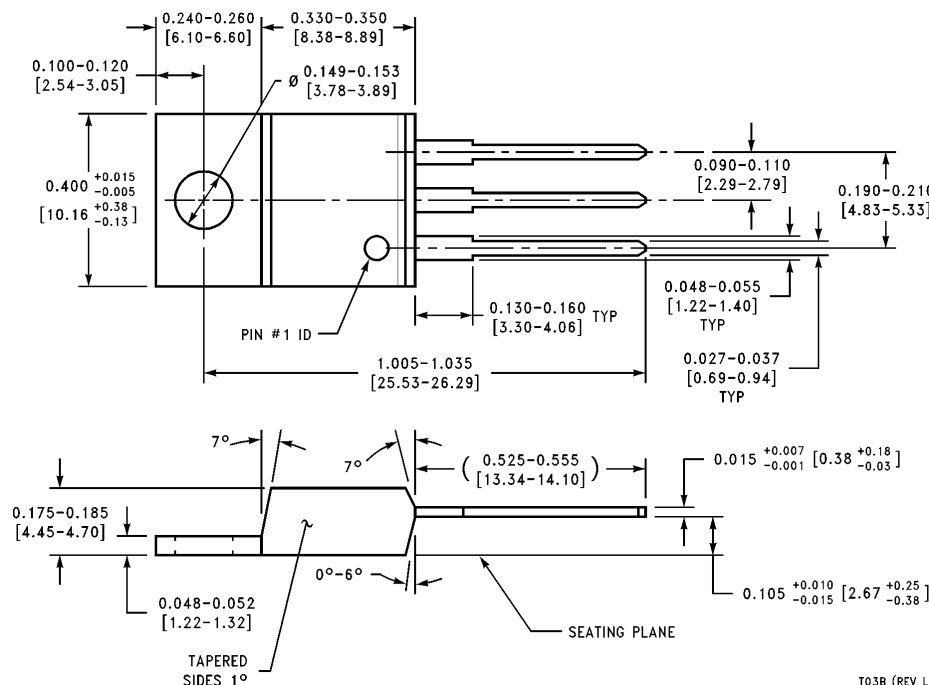


TL/H/7340-13





# Physical Dimensions inches (millimeters)



TO-220 Outline Package (T)  
Order Number LM7905CT, LM7912CT or LM7915CT  
NS Package Number T03B

T03B (REV L)

## LIFE SUPPORT POLICY

NATIONAL'S PRODUCTS ARE NOT AUTHORIZED FOR USE AS CRITICAL COMPONENTS IN LIFE SUPPORT DEVICES OR SYSTEMS WITHOUT THE EXPRESS WRITTEN APPROVAL OF THE PRESIDENT OF NATIONAL SEMICONDUCTOR CORPORATION. As used herein:

1. Life support devices or systems are devices or systems which, (a) are intended for surgical implant into the body, or (b) support or sustain life, and whose failure to perform, when properly used in accordance with instructions for use provided in the labeling, can be reasonably expected to result in a significant injury to the user.
2. A critical component is any component of a life support device or system whose failure to perform can be reasonably expected to cause the failure of the life support device or system, or to affect its safety or effectiveness.



**National Semiconductor Corporation**  
1111 West Bardin Road  
Arlington, TX 76017  
Tel: 1(800) 272-9959  
Fax: 1(800) 737-7018

**National Semiconductor Europe**  
Fax: (+49) 0-180-530 85 86  
Email: cnjwge@tevm2.nsc.com  
Deutsch Tel: (+49) 0-180-530 85 85  
English Tel: (+49) 0-180-532 78 32  
Français Tel: (+49) 0-180-532 93 58  
Italiano Tel: (+49) 0-180-534 16 80

**National Semiconductor Hong Kong Ltd.**  
19th Floor, Straight Block,  
Ocean Centre, 5 Canton Rd.  
Tsimshatsui, Kowloon  
Hong Kong  
Tel: (852) 2737-1600  
Fax: (852) 2736-9960

**National Semiconductor Japan Ltd.**  
Tel: 81-043-299-2309  
Fax: 81-043-299-2408